

Implement SmartPeak WLM on your desktops to increase the quality of service delivered to your end users, while saving on support costs and reducing your carbon footprint.

Out-of-the-box, SmartPeak WLM's default configuration ensures that all processes receive an equal share of CPU, regardless of how much they are requesting. This instantly creates a level playing field for processes such that no single process, or group of processes, can dominate the available processing resource.

Increase quality of service

How often do your users complain that their PC or laptop has frozen up yet again, just when they were finalizing that crucial document? In a Windows environment, it can be a lottery which applications get the lion's share of CPU, memory and bandwidth. SmartPeak WLM simply solves this problem through dynamic, intelligent resource management. Now previously unresponsive PCs deliver consistent

performance and hourglass-enforced coffee breaks become a thing of the past. Configured in minutes and deployed across thousands of machines in hours, SmartPeak WLM improves application response times to create a better desktop experience for a more productive workforce.

Out-of-the-box, the default configuration ensures no single process, or group of processes, can hog resource by giving each an equal share of CPU.

Create rules to increase performance of the applications that matter most to your users. Primary applications such as those in the foreground can be given priority, while restricting resource to secondary consumers, minimized applications and processes running in the background.

Key benefits

- ➔ Increase quality of service
- ➔ Reduce support costs
- ➔ Reduce carbon footprint
- ➔ Optimize Vista

Read the review:

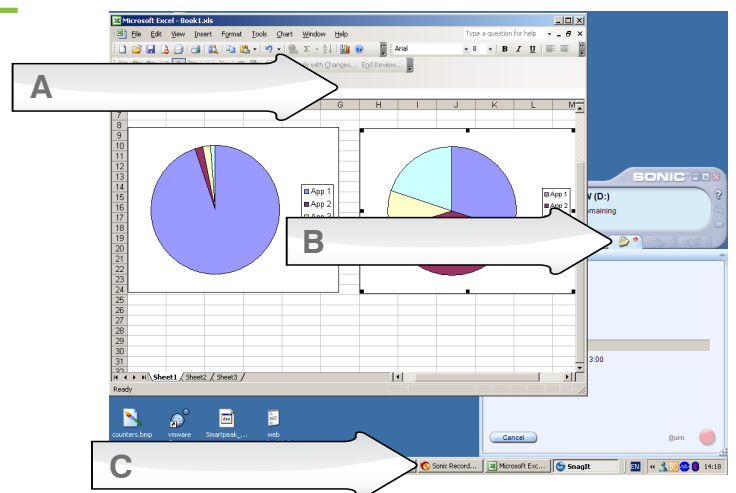
"SmartPeak WLM's simple configuration rules allow processes to be allocated different proportions of resources depending on how important they are to the user or business, so you can ensure the computer is fully used while guaranteeing a consistent quality of service."

Server Management Magazine, March 2007

www.smartpeak.com/collateral

Application performance management on the desktop

- A** The application in the foreground can be assigned a greater share of resources.
- B** Resource-intensive applications can be assigned a Soft Limit, ensuring that when system resources are required elsewhere, the application is not permitted to consume more resources than their designated limits.
- C** Applications can be assigned different allocation of resources when not currently in use, e.g. when the application is in the background or minimized.



Reduce support costs

SmartPeak WLM can reduce the number of times system administrators have to physically attend a support incident by guaranteeing that resource issues do not prevent remote access to PCs and laptops. What's more, system errors can be investigated without shutting desktops down, making fault diagnosis much simpler and more effective.

Reduce carbon footprint

A survey by Fujitsu Siemens Computers found that 37% of workers don't switch off their PCs when they leave the office, racking up large electricity bills and damaging the environment. Moreover, many companies leave PCs on overnight to roll out updates so as not to affect quality of service during the working day.

SmartPeak WLM allows you to administer patches, updates, antivirus and backup routines during the working day without affecting the users' quality of service. With estimated power savings of \$39 per annum for each desktop, by switching machines off between 19:00 and 08:00 and at weekends, SmartPeak WLM pays for itself in reduced electricity costs alone.

Optimize Vista performance

Organizations face many challenges and new opportunities with the launch of Vista; not least whether the new operating system's increased resource requirements will negatively impact performance for end users. SmartPeak WLM improves the responsiveness of Vista, ensuring that end users experience the benefits of the powerful user interface with rapid reaction times.

Typical 5 year savings with SmartPeak WLM

5 Year Savings	Without WLM		With WLM	
	No.	Cost	No.	Cost
Remote fixes	35	\$ 875.00	40	\$1,000.00
On-site fixes	15	\$1,500.00	10	\$1,000.00
Power costs		\$ 280.71		\$84.60
WLM cost				\$ 76.00
TOTAL COST		\$2,655.71		\$2,160.60
Savings per desktop				\$ 495.11

Notes:

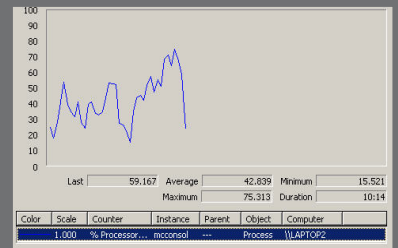
Support:	Assume each PC has on average 10 support calls per annum: 70% remote (\$25 per call), 30% visited (\$100 per call)
Power:	Without SmartPeak WLM, PCs are left switched on 24/7, 365 days a year With SmartPeak WLM, PCs are switched on 8am-7pm, 5 days/week, 48 weeks/year Desktop rated at 65w (not including monitor) Cost of power: \$0.0986 per kWh (US national average, March 2006)
SmartPeak WLM:	5 year cost made up of \$38 perpetual software license & \$38 software subscription

Controlling Anti-Virus:

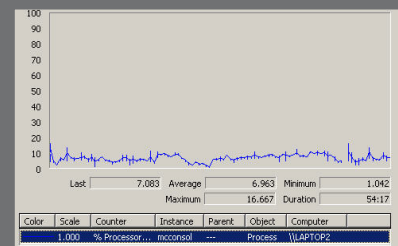
AV is typical of an application that can disrupt the user experience causing unnecessary loss in productivity and dissatisfied users.

View the test results to see how SmartPeak can cap the amount of CPU delivered to Anti-Virus when required by primary applications.

Without SmartPeak WLM:



With SmartPeak WLM



www.smartpeak.com/av